



The City of Lathrup Village Recreation Plan

Prepared by: The City of Lathrup Village Recreation Advisory Committee
Adopted by: The City of Lathrup Village City Council
Assisted by: Clearzoning, Inc.
Adopted on _____

Prepared by the City of Lathrup Village Recreation Advisory Committee

City Administrator: Matthew Baumgartem
Recreation Coordinator: Maralee Rosemond

Assisted by:
Clearzoning, Inc.
28021 Southfield Rd.
Lathrup Village, MI 48076
p 248.423.1776
www.Clearzoning.com



The City of Lathrup Village Recreation Plan



Table of Contents

Community Description	1
Administrative Structure	7
Parks & Recreation Inventory	9
Recreation Needs Analysis	21
The Planning Process	27
Goals & Objectives	29
Action Strategies	33
Appendix	37

Intentionally Blank



1 Community Description

The City of Lathrup Village

prepared this Recreation Plan to:

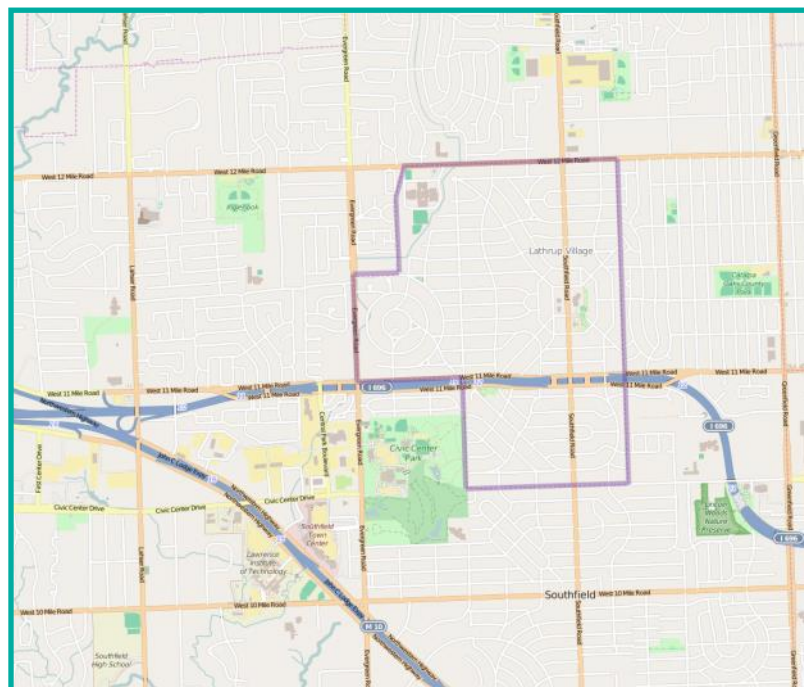
- Create an inventory of existing parks and recreation facilities in and around the City
- Gain community input on the parks and recreation strengths and weaknesses,
- Develop goals and objectives that will lead to future improvements.

This plan will address parks located within the City of Lathrup Village. All aspects of recreation will be evaluated through the planning process. The previous Recreation Plan, completed in 2009, will be reviewed; any remaining goals that are still pertinent will be detailed. New objectives will be added as appropriate.

The City of Lathrup Village is located in southeast Oakland County. Access throughout the region is provided by I-696 and Southfield Road (see Map 1), which divide the City into four quadrants. The City of Lathrup Village is approximately 1.5 square miles of area surrounded

by the City of Southfield. The two communities share the same school district, but do not share or combine any municipal programs such as budgets, recreational facilities and programs.

Map 1: City of Lathrup Village Location Map



The City of Lathrup Village, a nationally registered historic city, is a culturally and racially diverse, higher income, professional community in south Oakland County. Residents are very community-focused and protective of the character and unique heritage of their city.

Population

The 2010 population for Lathrup Village was 4,075, down from 4,236 in 2000. The Southeast Michigan Council of Governments (SEMCOG) projects the City's population will continue to decline, potentially to 3,588 residents by 2040.

The number of households has decreased over the past ten years as well, from 1,621 to 1,610. Household size has decreased slightly from 2.6 to 2.53 persons. The City's 4,075 residents are split fairly evenly between males and females.

In terms of racial composition, The number of Non-Hispanic whites has decreased from 46.3% to 33.7%, while the black population has increased from 49.7% to 60.9%. Asian, multi-racial, and "other" races have collectively increased from 3.3% of the population to 4.8% of the population

While the City's population has decreased, there has been an increase in one segment of the population: adults aged 65 and over. In 2010, the Census reports the median age increased from 40.5 to 45.8 years. SEMCOG projects

that this trend will continue—in Lathrup Village as well as in the region and the country. In Oakland County, the 65+ population rose from 134,959 in 2000 to 159,124 in 2010; SEMCOG projects this population segment to nearly double to 305,579 by 2040. This increase in the senior population is not only due to the aging Baby Boomer segment, but also is due to our population living longer and a lower overall birth rate. This growing segment of the City's population will play a role in the planning of recreation needs now and in the future.

Land Use & Zoning

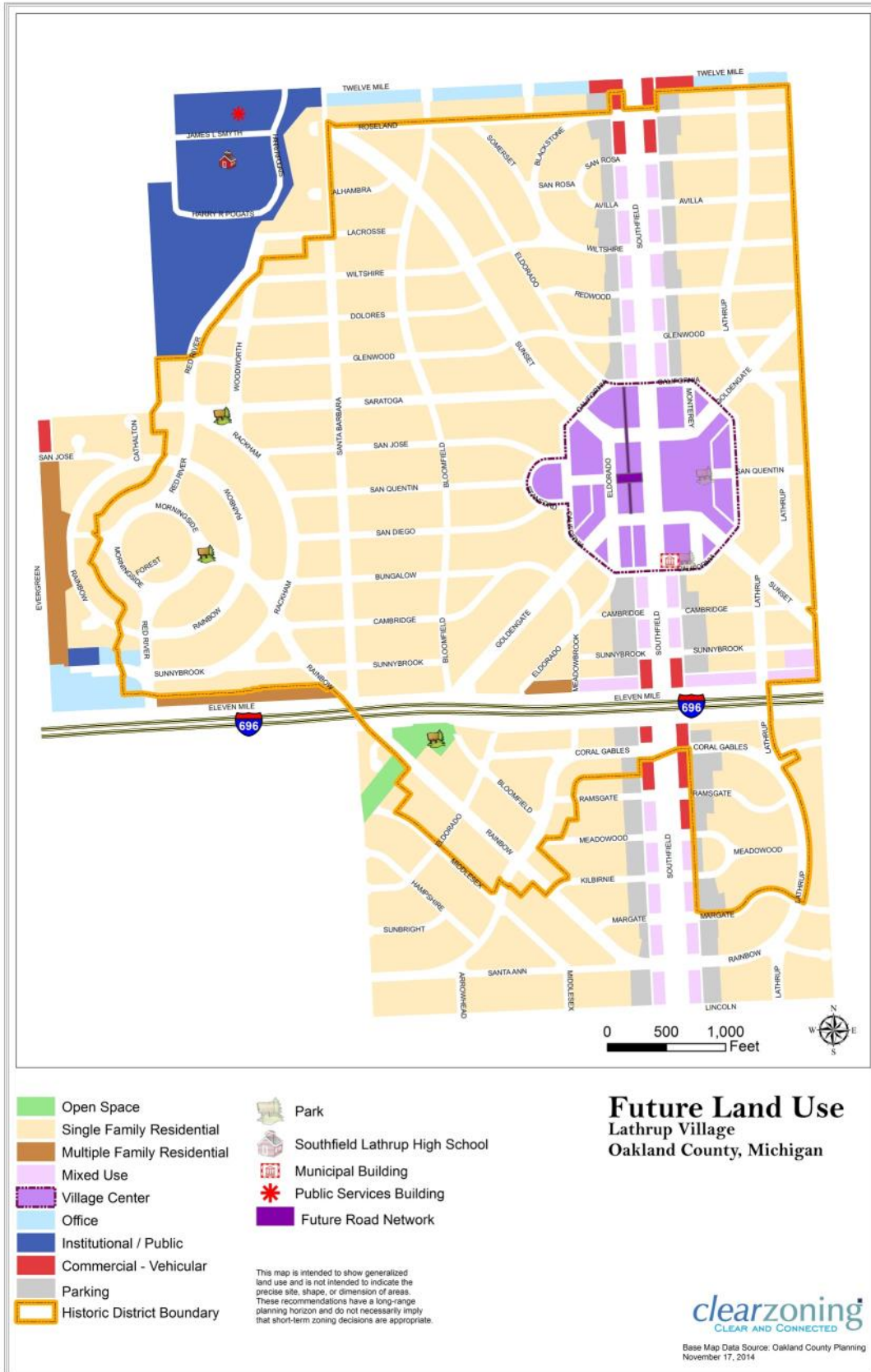
The City of Lathrup Village is largely developed. Land use within the City of Lathrup Village is mainly comprised of single family detached homes, with its commercial uses consolidated primarily along the Southfield Road corridor. There are several areas of park space within the City, most of which are neighborhood parks. This will be discussed further in the chapters ahead.

The City's zoning supports the vision set forth in the Master Plan. Refer to Future Land Use and Zoning maps (Maps 2 & 3).

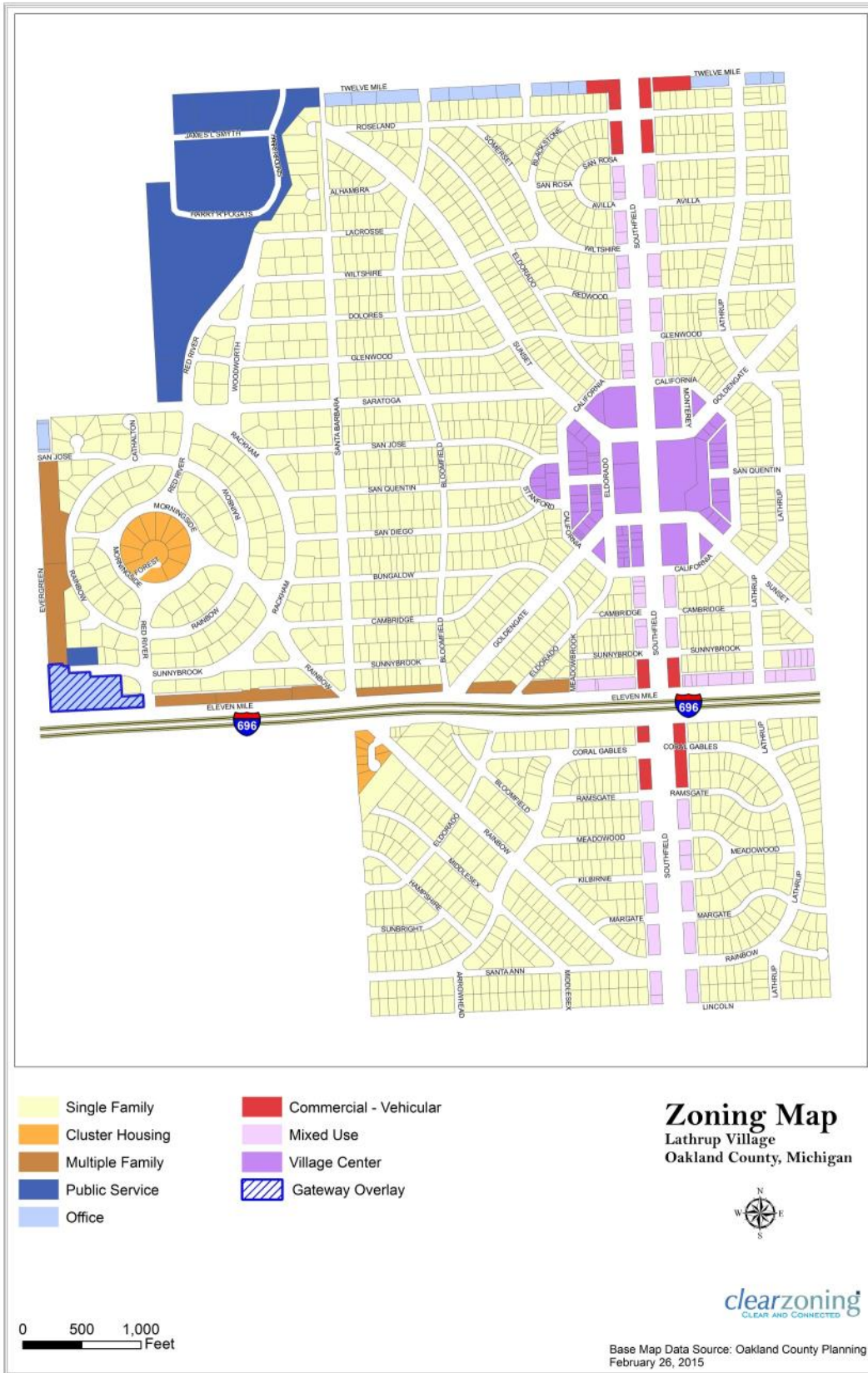
Images from Lathrup Village (neighborhood—top, and Southfield Road—bottom)



Map 2: Future Land Use Map



Map 3: Zoning Map





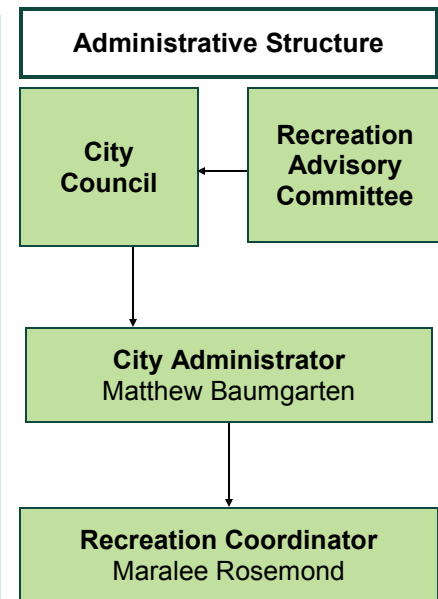
2 Administrative Structure

The City of Lathrup Village has one staff member, the Recreation Coordinator, who is responsible for developing and implementing the following:

- Managing community events, including Concerts in the Park
- Coordinating recreation programming, including researching and hiring instructors for all classes offered
- Managing the Fitness Center in the lower level of the municipal building and overseeing the parks
- Managing the City Recreation Budget
- Recruiting volunteers and sponsors
- Developing working relationships with local community organizations and businesses.

Table 1. City of Lathrup Village Parks and Recreation Budget

	FY: 2014-2015	FY: 2015-2016
Salaries & Wages	\$30,613	\$30,619
Personnel Costs	\$26,093	\$24,961
Supplies & Grounds Maintenance Costs	\$5,000	\$5,000
Contracted Services	\$0	\$0
Park Improvements	\$25,000	\$25,000
Utilities & Insurance	\$0	\$0
Equipment Maintenance	\$0	\$0
Total	\$86,706	\$85,581



The Recreation Coordinator relies heavily on the participation and support of the City’s volunteer system. While offering quality recreational and leisure experiences, the department could not effectively carry out these activities without the assistance of these dedicated individuals.

Knowing that the participation and opinions of the community are necessary for the planning and implementation of successful and effective recreation programs, the Lathrup Village City Council in May of 1983 adopted a standing resolution forming the Recreation Advisory Committee. The Recreation Advisory Committee is composed of six or more members representing the various areas and age groups of the City. The committee members are appointed by the City Council and members serve for a minimum of three years. The Recreation Coordinator acts as the chairperson of the committee.

The duties of the Advisory Committee are as follows:

- Advise the Recreation Coordinator on effectiveness and desirability of current programs
- Suggest new programs and changes in current programs
- Suggest new development or improvement strategies for existing parks, or the potential development of new parks as the opportunity arises.
- Assist the Recreation Coordinator in the development and monitoring of the Five Year Recreation Plan.

The 2014-2015 Recreation Budget was projected at \$86,706. The budget is funded by the General Fund. Capital improvements are under the direction of the City Administrator.

Community Events are the recreational “backbone” of Lathrup Village. The Recreation Coordinator has worked diligently with the various community groups to seek financial support for many of these events. The Recreation Department has also developed a wonderful working relationship with

several of the major businesses who participate in community events as sponsors.

Community events require many hands to ensure a safe and fun environment. The Recreation Coordinator has cultivated a strong and reliable volunteer group. These volunteers offer their time throughout the year to carry out many different duties. Because of the City’s limited human and financial resources for parks and recreation activities, the value of the City’s volunteers cannot be overstated. Without the help of these many talented individuals, community events as we know them in Lathrup Village might not happen. This year, the City will start an annual effort to recognize their “volunteer of the year” by honoring the recipient with their name on a sign at the Municipal Park.

Lathrup Village Farmers Market



One of the newer activities led by the Recreation Coordinator is the farmers market. This market has grown with annually increasing participation by vendors from around the State of Michigan. This weekly market runs all summer and is currently set up in the municipal complex parking lot, under small tents.



3 Parks & Recreation Inventory

The City of Lathrup Village has one central park area within its boundaries. In addition, the City has several small neighborhood and “island parks.” Surrounding Lathrup Village is the **City of Southfield**, who has several parks that are accessible for Lathrup Village residents.

Schools in the Southfield School system also offer recreational opportunities to nearby residents with playgrounds and sports fields. Southfield Lathrup High School is located in the City of Lathrup Village and there are five other schools nearby (see Map 4), offering playgrounds and sports fields.

Lathrup Village is located in **Oakland County**, which owns and maintains a parks system. There is one county-owned park, Catalpa Oaks, within easy reach of Lathrup Village residents. This 24-acre park offers sports fields and a picnic pavilion.

The convenient location of Lathrup Village near an Interstate highway affords residents easy access to numerous regional parks. The region contains a significant number of recreational resources (See Map 5), including state parks and Metroparks.

The **Huron-Clinton Metropark Authority (HCMA)**, a regional parks authority, owns and maintains recreational resources along the Huron and Clinton Rivers in southeast Michigan. The HCMA has developed a system of 13 regional parks, several of

which are within a 30– to 45-minute drive of the City of Lathrup Village. Activities such as picnicking, swimming, fishing, boating, wildlife study and horseback riding can be enjoyed at many of the HCMA parks.

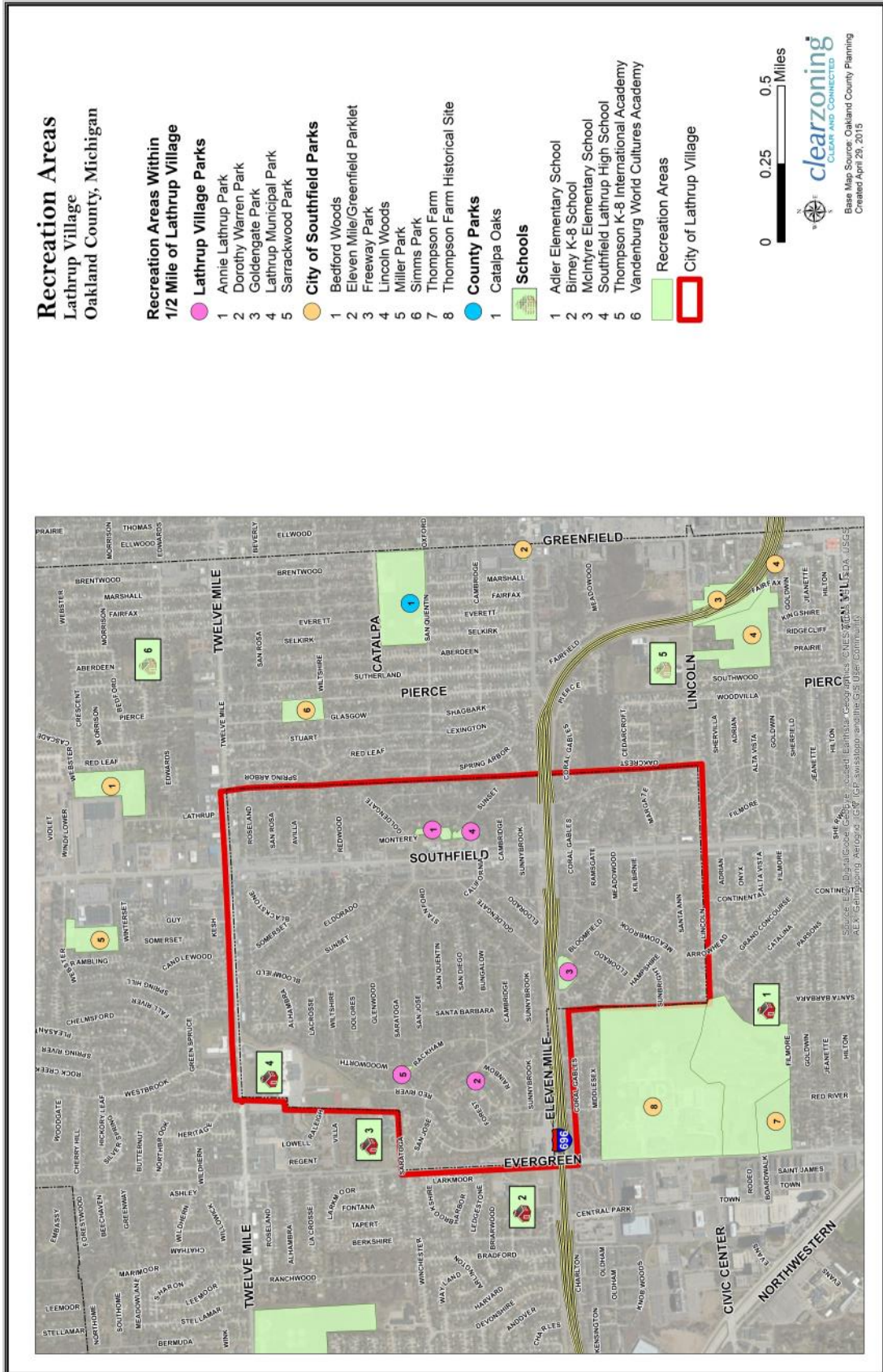
There are one dozen **State Parks or Recreation areas** within a 45-minute to one hour drive of the City of Lathrup Village. Among their many available activities, these State Parks offer camping, hunting, hiking, cross-country skiing and snowmobile trails.

Other nearby recreational opportunities include public golf courses located around the City of Lathrup Village. There are numerous fitness clubs within a 15-minute drive of the City, as well as arenas for indoor skating and hockey and indoor soccer.

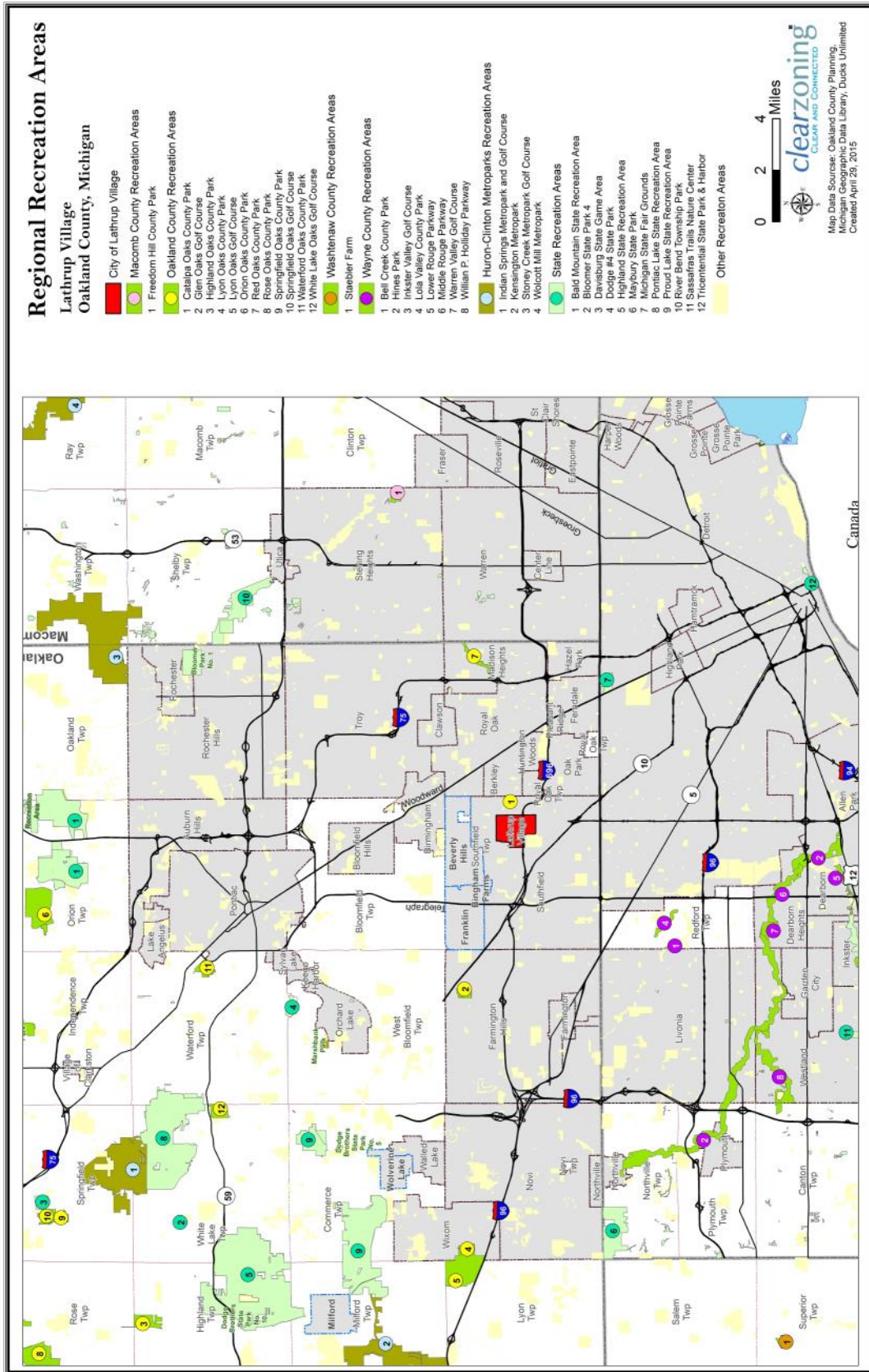
The inventory that follows provides a detailed look at the amenities available at each City park, as well as the local schools, private recreation areas, and regional parks in the area.

The most recent DNR grant award project is listed in the following description; a complete listing of funded projects is provided in the Appendix.

Map 4: Recreation Areas Accessible for Lathrup Village Residents



Map 5: Regional Recreation Areas



CITY OF LATHRUP VILLAGE PARKS (This section is in progress)

Lathrup Village Municipal Park

This park is located directly behind the City’s Municipal Building and encompasses 2 acres. It serves as the central gathering place for City events, including concerts in the park.



Type	Mini Park
Size	2 acres
Accessibility Rating	2

Amenities	
1 Gazebo	
1 picnic shelter with grill	
Picnic tables	
Children’s garden	
Playground equipment	
Benches	

.....

Goldengate Park

This 2.5-acre park provides opportunities for residents in the south section of the City, south of I-696. It features recently upgraded playground equipment.



Type	Mini Park
Size	2.5 acres
Accessibility Rating	3

Amenities	
Playground equipment	
Benches	
Asphalt paved trail	
Picnic tables/grills	
Parking lot	

DNR Grant Inventory:

Project #

Name: Goldengate Park Improvements

Year: 2013

Scope: Repair drainage problems, replace outdated and unsafe playground equipment.

Status: Park has been developed with amenities listed above.

Annie Lathrup Park

Located adjacent to City Hall, this park is about two acres in size and features a 1/4 mile walking/jogging asphalt pathway.



Type	Mini Park
Size	2 acres
Accessibility Rating	2

Amenities
Benches
Walking path

Sarrackwood Park

This 3/4 acre park is located at Saratoga, Rackham, and Woodworth Way streets. It serves the local neighborhood in the northeast quadrant of the City.



Type	Mini Park
Size	3/4 acre
Accessibility Rating	3

Amenities
Playground equipment
Benches/picnic tables
Garden area

Dorothy Warren Park

This 1/2 acre park is located on Rainbow Drive in the northeast portion of the City. It is undeveloped but is maintained with a grassy lawn.



Other Municipal Facilities and Local Schools

Lathrup Village Fitness Center:

The lower level of the municipal building is home to the Studio and also the Fitness Center. The center holds over 17 pieces of commercial grade equipment, including treadmills, ellipticals, recumbent bikes, and two-man weight station. Current fees are: \$50/year for ages 18-54 and \$40 /year for those over age 55.

Nearby Schools

Southfield Lathrup High School

Located in the City of Lathrup Village, at the northwest corner, this facility includes sports fields, tennis courts, and a track.

McIntyre Elementary School

This school is located on the east side of Evergreen Road, south of 12 Mile, and is adjacent to the western border of the City. It is accessible on foot to residents in Lathrup Village. This school offers a playground and sports fields.

Birney K-8 School

This school is located on the west side of Evergreen Road and is across the street from Lathrup Village's west boundary. This school has sports fields.

Adler Elementary School

This school is within walking distance of Lathrup Village residents in the south end of the City. It contains a playground.

Thompson K-8 International Academy

This school is located within walking distance of residents in the southeast corner of the City. It contains a playground, sports field, and two tennis courts.

Vandenburg World Cultures Academy

Located across 12 Mile Road from the City's northern border, this school offers a playground and sports fields.

City of Southfield Facilities

The City of Southfield has several parks within a short walk, bike ride, or drive of Lathrup Village residents in all quadrants.

Civic Center Park

The largest facility is the Civic Center Park, which abuts the City of Lathrup Village's southwest corner and offers a wide variety of recreational opportunities, including: nature trails, amphitheater, swimming pool, fitness center, sports fields and courts, tennis courts, and a golf course. A multi-use path connects residents of Lathrup Village to the Southfield Civic Center.

Neighborhood Parks

Eight of Southfield's neighborhood parks are in an accessible distance to Lathrup Village. These parks offer picnic areas, sports fields, and courts, trails, playlots, senior activities, and historical points of interest.

County Parks

Catalpa Oaks

The only Oakland County park near Lathrup Village, this park is located on the west side of Greenfield Road between 11 and 12 Mile Roads. It offers nearly 24 acres of recreational space. The park contains eight sporting fields, a pavilion for rent, playlots, and picnic areas. Fees are required to enter county parks.

Barrier-Free Analysis

A critical component in planning for recreation facilities is providing barrier-free access to accommodate the needs of both physically and mentally challenged visitors. Barrier-free access includes, but is not limited to, ensuring that adequate barrier-free parking spaces, sidewalks, trails, picnic tables, and playground equipment are provided for renovated or new recreational facilities. Standards from The Accessibility Checklist, a guidebook founded upon the Uniform Federal Accessibility Standards (UFAS) and the codes and standards of the Americans with Disabilities Act (ADA), were used to verify barrier-free compliance.

The MDNR Guidelines require that a barrier-free ranking be given to each facility for assessing its accessibility to persons with disabilities. The assessment considers the accessibility of both the facilities themselves as well as the access routes to them. The following system, provided by the MDNR *Guidelines for the Development of Community Park, Recreation, Open Space and Greenway Plans (01/27/06)*, was used to assess each park:

Rank 1: None of the facilities / park areas meet accessibility guidelines.

Rank 2: Some of the facilities / park areas meet accessibility guidelines.

Rank 3: Most of the facilities / park areas meet accessibility guidelines.

Rank 4: The entire park meets accessibility guidelines.

Rank 5: The entire park was developed / renovated using the principals of universal design.

Examples of facilities that support barrier-free access are illustrated below. Note how paving connects park elements for those with mobility concerns.



Barrier-Free Analysis

In the City of Lathrup Village, there are general improvements that could be made to each park that would make the parks more accessible: (see Appendix C for more detailed list of guidelines)

- Provide concrete pads adjacent to existing benches that allow users in wheelchairs the ability to be seated next to a friend on a bench.
- Move trash receptacles adjacent to the paved walkways
- Develop paved or stabilized pathways for all amenities within the parks; make all paths of sufficient width for two people to walk side-by-side or pass
- Provide smooth transitions between trails and parking areas, etc.
- Where picnic tables are provided, use a variety of table styles, some with clear sitting space on the side
- When making playground improvements, provide ramps and transfers, and use “poured-in-place” or rubber tiles under equipment, rather than loose fill material such as woodchips; as playground equipment requires replacement, provide ramps and transfers to all play components.
- Provide accessible routes to all sides of ball fields and sport courts, with accessible seating spaces.

DNR RECREATION GRANT INVENTORY

The City of Lathrup Village has received three grants from the State of Michigan as described below:

Goldengate Park Improvement: 1989

- Project number: BF89-287 Protecting Michigan’s Future Bond
- Grant Amount: \$52,500
- In 1989 the City of Lathrup Village developed Goldengate Park. The following improvements for the overall project included:
 - * Play equipment
 - * Site amenities such as benches, picnic tables, BBQ’s, trash cans
 - * Landscaping Paved pathways
- Current status: Completed

Lathrup Municipal Park: 1999

- Project number: CM99-151 Clean Michigan Initiative Recreation Bond Fund
- Grant amount: \$53,861
- The development of the Lathrup Village Municipal Park incorporated not only funds from the City and the State of Michigan but several community groups also stepped forward to become an “invested” participant. Improvements included: a 30 foot colonial gazebo, decorative lighting, park benches, landscaping, brick paver walkways, picnic tables, new bike racks and an informational kiosk which were all added to develop a sense of charm and function. Underground sprinklers were added to keep the large grassy area lush and inviting.
- Current Status. Completed. The Lathrup Village Municipal Park has become the leisure focal point of the city and is home to many community events and activities.

Goldengate Park Improvement: 2011

- Project number: MNRTF 11-012
- Grant Amount: \$50,000
- The following improvements for the overall project included:
 - * Barrier-free play equipment and ADA compliant surfacing
 - * Correct drainage on the site to eliminate flooding, especially near the playground.
- Current status: Completed



4 Recreation Needs Analysis

To analyze the recreational needs

of City residents and determine deficiencies within recreation programs, it is helpful to consider standards for recreation service areas, land needs based on future population, and the ultimate size and extent of recreation facilities and their location.

These recreation planning standards are a useful tool in making an assessment of future recreation needs. Standards may be used effectively only as a means for comparing present conditions to what is thought to be suitable or desirable, and as a general guide toward estimating future needs and demands.

The following organizations have developed guidelines for recreation, which together offer guidance in this analysis of the City of Lathrup Village's recreation facilities:

- **Urban Land Institute (ULI).** The ULI, a private research organization concerned with planning and development of land, recommends standards for recreation areas for community and neighborhood development.
- **National Recreation and Park Association (NRPA).** The NRPA developed the following recommended standards and guidelines for recreation, parks and open space.

- **Michigan Department of Natural Resources Classification System.** This resource is provided by the state in its current recreation plan guidelines.

Recommended Community Recreation Facilities:

The major types of community recreation facilities recommended by the above organizations include:

1. Playgrounds/Mini-Parks

Specialized facilities that serve a concentrated or limited population (within a 1/4 mile radius), or specific groups such as small children or senior citizens. For example, suggested recreational amenities for an individual mini-park are a tot lot, 2 picnic tables and ½ acre open space.



2. Playfield or Athletic Fields/Neighborhood Park

Neighborhood parks should offer a variety of activities to accommodate a range of ages, physical abilities, and recreational interests, serving residents within a 1/2 mile radius. Schools may be included in this category as well, since their service area is typically over that of a playground or mini-park. It is recommended that neighborhood parks should be comprised of approximately 50% active uses (fields, courts, playgrounds, skating, etc.) and 50% passive uses (trails, picnic areas, etc.). It is recommended that a minimum of 7-10 parking spaces should be provided.

3. Community Parks

Community-wide parks include larger parks with diverse environmental quality serving residents within a 1/2 mile—3 mile radius, depending on the density of the population and built environment. In the Case of Lathrup Village, a 1.5 mile service area is being utilized. A variety of passive and active uses are typically provided in such parks, including athletic fields, sledding hills, trails, picnic areas, and playgrounds. Uses are generally separated by activity and age group to limit potential conflicts between different types of users. Other potential activities could include outdoor swimming, lighted spectator-type athletic fields, ice skating, and ample off-street parking.

4. Connector Trails

Connector trails would include a multi-use trail to give non-motorized access to parks and other uses throughout the City of Lathrup Village. Modes of travel include walking, biking, and in-line skating. These trails could be located in an independent right-of-way, such as along the utility corridors, or within the road rights-of-way. There are no current standards for trails within/around a community.

Assessment of Lathrup Village Recreation Opportunities

Park types and sizes

Due to the small size of Lathrup Village and the fact it is divided into quadrants by the physical barriers of Southfield Road and I-696, it would be difficult to apply any standards for park space at a level greater than the mini-park. In fact, most of the City's residents are within walking distance of a park and/or school within the City of Southfield. It is not anticipated that the City of Lathrup Village would have an opportunity to acquire more than a residential parcel or two. Given limited municipal resources, the focus of the City will likely be on maintaining the existing facilities and creating connections between them.

Connector trails, paths and greenways currently do not exist within the City. However, the City's 2011 Non-Motorized Transportation Plan identifies opportunities for such trailways throughout the City.

In determining the total recreational needs for the City as a whole, it is important to consider location of existing parks and facilities—those in Lathrup Village as well as those that may serve Lathrup Village residents in adjacent communities. In order to evaluate the recreational needs of more specific areas and identify those that may be underserved, the City's parks and recreation facilities were evaluated based on their location and service area.

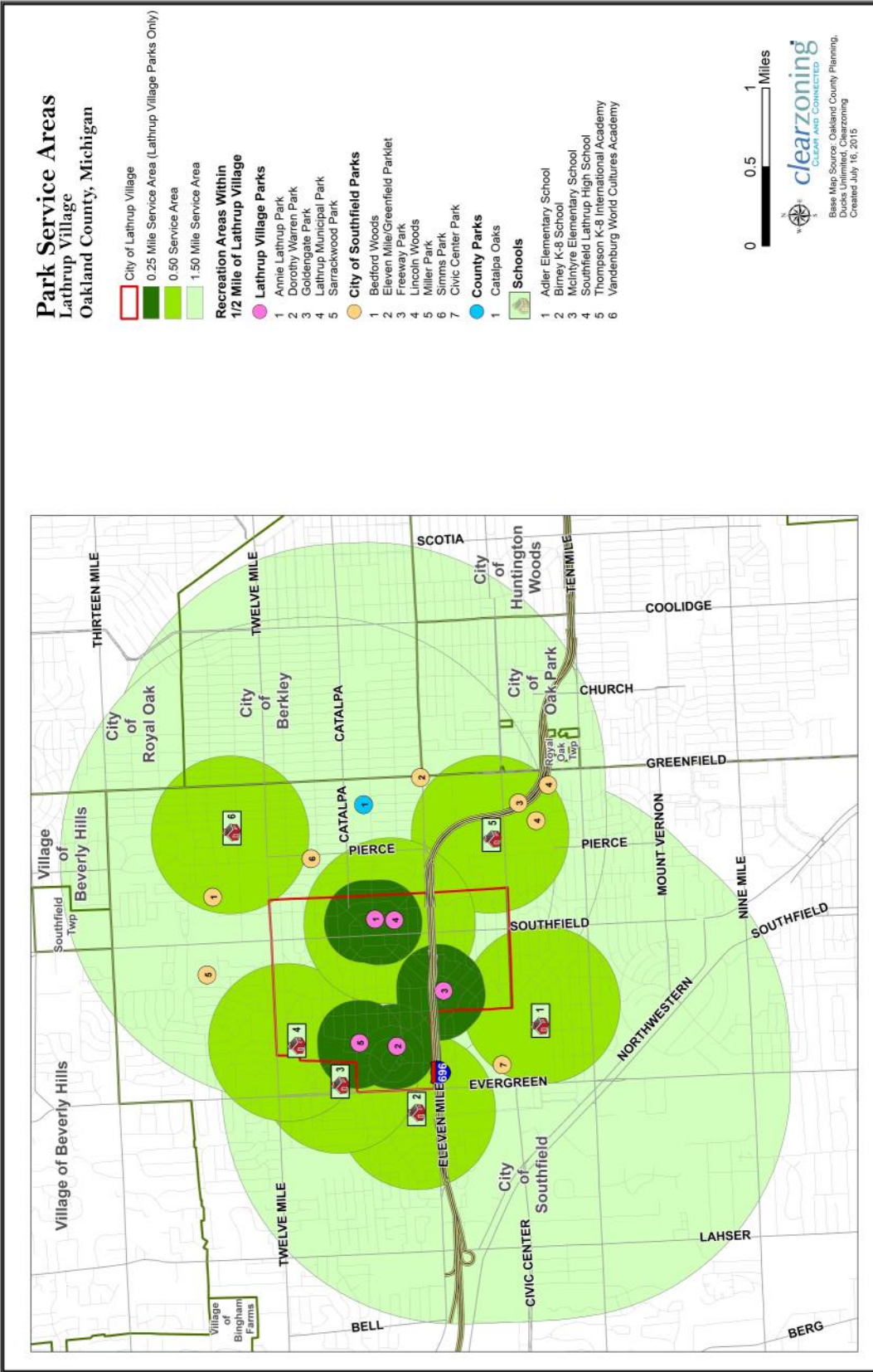
The following conclusions can be drawn from the location and service area analysis illustrated by Map 6:

- The basic recreational needs of its residents appears to be met; the resources available within the City of Southfield in terms of parks and schools provide additional recreational opportunities.

- The schools, serving a roughly 1/4 mile radius, appear to be well-positioned in reach of the City's four quadrants and offer basic recreational facilities, from playgrounds to sport courts.
- The Municipal Park and Annie Lathrup Park together create the largest City park space (about 4 acres) and offer a number of amenities that can appeal to a variety of ages.
- There are significant geographic barriers to most of the mini parks offered in the City of Lathrup Village. This limits the service area of some of the City's parkland.
- Planned Trails and Greenways should be pursued in and around the City of Lathrup Village and in partnership with the City of Southfield, per the City's Non-motorized Transportation Plan. Consideration should be given to pedestrian crossings to ensure safe travel around the City.
- Existing Lathrup Village streets provide easy access to local parks and may be included in as part of an overall trail system, given proper signage and safety considerations.



Map 6: Park Service Areas





5 The Planning Process

The recreation planning process in the City of Lathrup Village is intended to involve individuals who represent a broad cross-section of the community’s population. The City Council is responsible for implementing the Recreation Plan, but the Recreation Advisory Committee provides input, analysis and recommendations.

The planning process began with an inventory of all City of Lathrup Village parks facilities and those within the City of Southfield. A survey was developed and posted online. Public input suggests for the City to concentrate its efforts in continued community events such as the Farmers Market and Summer in the Village, develop sports courts, and connections with nature in parks. A news release and flyers advised the public of the opportunities to voice comments (See Appendix).

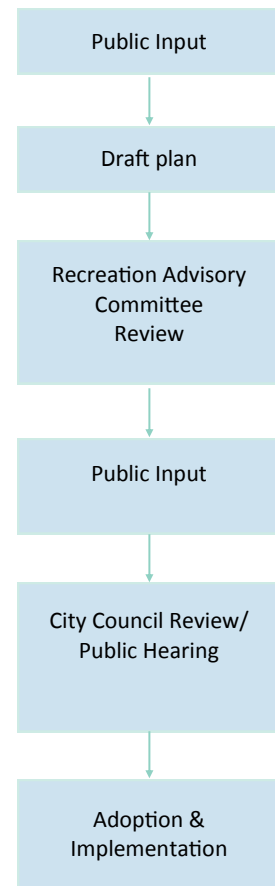
The City Council held a public input meeting on January 21, 2016.

Using the inventory, the results of the public workshop and survey findings, this Recreation Plan identifies strengths and opportunities of the current parks facilities, along with goals for the future.

The draft plan, along with a 5-year action program of priority projects, was reviewed by the Recreation Advisory Committee.

Following the recommendation of approval by the Recreation Advisory Committee, the plan was presented to City Council. The draft plan was made available for public review and comment for at least 30 days prior to formal adoption by the City Council. Notice of the public review period was provided in the local newspaper. The plan was presented at a public hearing held by City Council. Copies of the notices announcing the review

period and public hearing are included in the Appendix.



(This section is in progress)

This page intentionally blank



6 Goals & Objectives 2015-2019

Goals and Objectives formulated by the City of Lathrup Village are the basis of the recreation planning process. They form the framework for public and private decision-making regarding recreational facilities and programs in the City. This Recreation Plan seeks to pursue long-range recreational goals and objectives through specific short-range actions on the part of the City, County, and State as well as private entities.

Following the parks inventory and public input process, the Goals and Objectives were considered by the Parks and Recreation Commission. The Goals state the general concepts regarding what the City intends to accomplish, while the Objectives offer the more specific recommendations for achieving the Goals. The Goals and Objectives were developed utilizing the park observation and inventory, as well as from the public input received via the survey and the public input meeting.

GOAL 1: Take care of existing parks and recreational facilities.
Objectives:
To maintain continual cleanliness and functionality of recreation parks, facilities, and grounds.
Continue to build the volunteer base to help with park maintenance and increase pride in local parks

GOAL 2: Provide a variety of new and improved recreation facilities for public use.
Objectives:
Develop neighborhood parks according to the resident preferences and community knowledge.
Continue to work with adjoining communities to develop a non-motorized multiuse trail loop and system.

This page intentionally blank

(This section is in progress)



Action Strategies outline the City of Lathrup Village’s approach to implementing the goals and objectives identified in the previous chapter. These strategies are intended to provide guidance for planning and budgeting purposes for the next five years. They suggest priorities generally, but are not intended to be set in stone or limit additional creative approaches. Generally, parks and recreation action strategies should consider the following when outlining a strategy to implement goals and objectives:

1. Are there immediate health and safety concerns that need to be addressed?
2. What are opportunities that exist to partner with other groups towards a common goal?
3. Is there a person or group who can champion specific goals/objectives?
4. Are there multiple goals that can be achieved by implementing a project?
5. What projects affect the greatest number of people in the community and/or address the greatest need?
6. How can projects be broken down into phases for a multi-year approach?
7. What funding opportunities exist for implementation of certain goals?

Planning Actions reflect strategies aimed at identifying an approach to achieving certain goals and objectives. These are activities that can be undertaken at a variety of levels, including the Parks & Recreation Commission, the Planning Commission and the DDA.

Maintenance Actions address those issues identified in the plan as needing upgrades or attention to repair, safety or appearance. These activities will likely be addressed by the public services department, but may also include assistance by various community groups.

Administrative Actions will pursue strategies that keep an inventory of recreation facilities, programs and events for the City. Strategies developed through planning actions will be implemented and/or coordinated through administrative efforts.

Funding Actions will actively pursue local, cooperative and grant funding approaches to implementing the goals and objectives of the plan.

Action Strategy: 2016-2020

Action Strategy	Lead	Timeline
Maintenance		
Identify all play equipment that is in disrepair and does not meet ASTM standards that can be repaired.	RAC	2016
Develop a maintenance program to repair play equipment repair needs based on assessment.	Staff	2016
Identify number of traditional and barrier-free furnishings needed to serve all	RAC	2016
Identify cost for installation of water sources for watering flower beds in parks	RAC	2016
Repair the perimeter of the Municipal Park play areas for safety and access	Staff	2016
Continue to maintain all parks in good repair.	Staff	ongoing
Install water sources for park landscaping	Staff	2017
Partnerships		
Create annual work plan to guide volunteer efforts for seasonal clean up days in the parks and other events.	RAC	ongoing
Work with the local school system to line up community service hours to be carried out in the parks	RAC	ongoing
Recreation Improvements & Development		
Install Parjana water management system at Sarrackwood Park	Staff	2016
Identify and pursue alternative funding sources	RAC, staff	ongoing
Identify all play equipment that is in disrepair and that does not meet ASTM standards that needs to be replaced.	Staff	2016
Develop a program to replace play equipment repair needs based on assessment.	Staff	2016
Continue to provide recreation programming to City residents	Staff	ongoing
Resolve property line issue at Goldengate Park; acquire the two adjacent parcels to complete the park.	Staff	2016-2017
Non-Motorized Pathways		
Meet with adjoining communities to identify connections to the City's non-motorized pathways network	RAC, staff	2016
Identify gaps in the non-motorized pathways network and pursue opportunities to complete those gaps	Staff	ongoing
Continue to attend the Urban Rails meetings to gain information on grant	Staff	ongoing

RAC = Recreation Advisory Committee



8 Appendix

Resolutions of Adoption
Public Notices
Meeting Minutes
Transmittal Letters
DNR Grant Inventory

**CITY OF LATHRUP VILLAGE
OAKLAND COUNTY, MICHIGAN**

**RESOLUTION TO ADOPT THE 2015-2020 LATHRUP VILLAGE
RECREATION PLAN**

At a regular meeting of the City Council of the City of Lathrup Village, Oakland County, Michigan, (the "City"), held on the 25th day of January 2016.

PRESENT: Brock, Ferguson, Garrett, Mannarino Thompson, Stallings

ABSENT: None

The following preamble and Resolution were offered by Ferguson and seconded by Garrett.

WHEREAS, the City of Lathrup Village has undertaken a planning process to determine the recreation and natural resource conservation needs and desires of its residents during a five year period covering the years 2015 through 2020, and

WHEREAS, the City of Lathrup Village began the process of developing a recreation plan in accordance with the most recent guidelines developed by the Department of Natural Resources and made available to local communities, and

WHEREAS, residents of the City of Lathrup Village were provided with a well-advertised opportunity during the development of the draft plan to express opinions, ask questions, and discuss all aspects of the recreation and natural resource conservation plan, and

WHEREAS, the public was given a well-advertised opportunity and reasonable accommodations to review the final draft plan for a period of at least 30 days, and

WHEREAS, a public hearing was held on January 25, 2016 the City of Lathrup

Village City Hall to provide an opportunity for all residents of the planning area to express opinions, ask questions, and discuss all aspects of the (name of recreation and natural resource conservation plan), and

WHEREAS, the City of Lathrup Village has developed the plan as a guideline for improving recreation and enhancing natural resource conservation for the City of Lathrup Village, and

WHEREAS, after the public hearing, the City Council voted to adopt said recreation plan,

NOW, THEREFORE BE IT RESOLVED the City Council of the City of Lathrup Village hereby adopts the City of Lathrup Village Recreation Plan for 2015-2020.

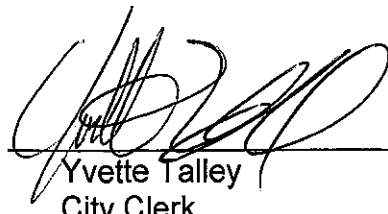
YEAS: Brock, Ferguson, Garrett, Mannarino Thompson, Stallings

NAYS: None

ABSENT/
ABSTAIN None

STATE OF MICHIGAN)
COUNTY OF OAKLAND)ss

I hereby certify that the foregoing is a true and complete copy of a Resolution adopted by the City Council of the City of Lathrup Village, Oakland County, Michigan at a regular meeting duly called and held on the 25th day of January, 2016, the original of which resolution is on file in my office, and that notice of said meeting was given, the meeting was held and the minutes filed in accordance with the Open Meetings Act, Act No. 267, Public Acts of Michigan, 1976, as amended.



Yvette Talley
City Clerk